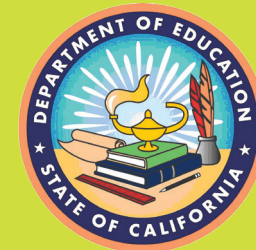


Attendance

in the early grades

Many of our youngest students miss 10 percent of the school year—about 18 days a year or just two days every month. Chronic absenteeism in kindergarten, and even preK, can predict lower test scores, poor attendance and retention in later grades, especially if the problem persists for more than a year.

Join Us for September Attendance Awareness Month:
Spread The Word!



Who is affected

Kindergarten and 1st grade classes often have absenteeism rates as high as those in high school. Many of these absences are excused, but they still add up to lost time in the classroom.

1 in 10 kids

in kindergarten and 1st grade are chronically absent. In some schools, it's as high as 1 in 4.¹



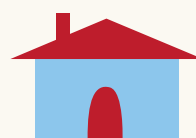
2 in 10 low-income kids

miss too much school. They're also more likely to suffer academically.¹



2.5 in 10 homeless kids

are chronically absent.²



4 in 10 transient kids

miss too much school when families move.²

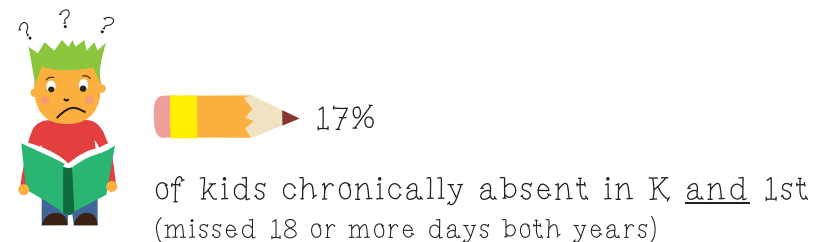
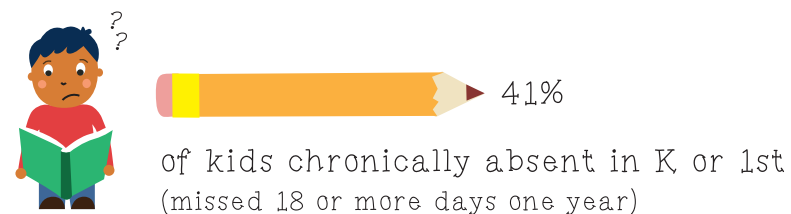
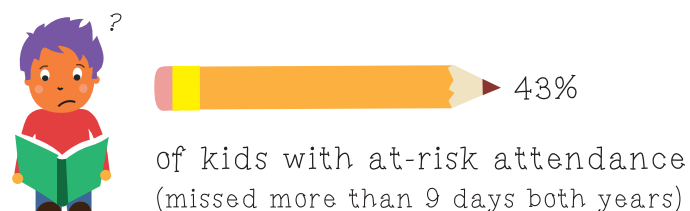


Why it matters

If children don't show up for school regularly, they miss out on fundamental reading and math skills and the chance to build a habit of good attendance that will carry them into college and careers.

Preliminary data from a California study found that children who were chronically absent in kindergarten and 1st grade were far less likely to read proficiently at the end of 3rd grade.

Who Can Read on Grade Level After 3rd Grade?³



What we can do

Engage Families



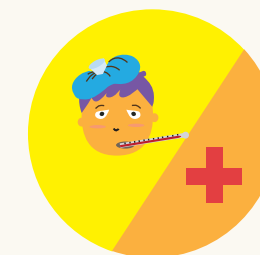
Many parents and students don't realize how quickly early absences can add up to academic trouble. Community members and teachers can educate families and build a culture of attendance through early outreach, incentives and attention to data.

Fix Transportation



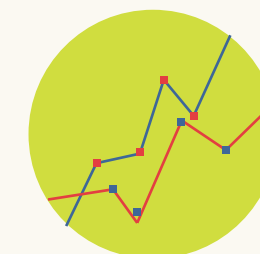
The lack of a reliable car, or simply missing the school bus, can mean some students don't make it to class. Schools, transit agencies and community partners can organize car pools, supply bus passes or find other ways to get kids to school.

Address Health Needs



Health concerns, particularly asthma and dental problems, are among the leading reasons students miss school in the early grades. Schools and medical professionals can work together to give children and families health care and advice.

Track the Right Data



Schools too often overlook chronic absence because they track average attendance or unexcused absences, not how many kids miss too many days for any reason. Attendance Works has free data-tracking tools.

These are a few steps that communities and schools can take. How do you think you can help?

¹ Chang, Hedy; Romero, Mariajose, Present, *Engaged and Accounted For: The Critical Importance of Addressing Chronic Absence in the Early Grades*, National Center for Children in Poverty: NY: NY, September 2008.

² *Chronic Absence in Utah*, Utah Education Policy Center at the University of Utah, 2012.

³ *Attendance in Early Elementary Grades: Association with Student Characteristics, School Readiness and Third Grade Outcomes*, Applied Survey Research, May 2011.